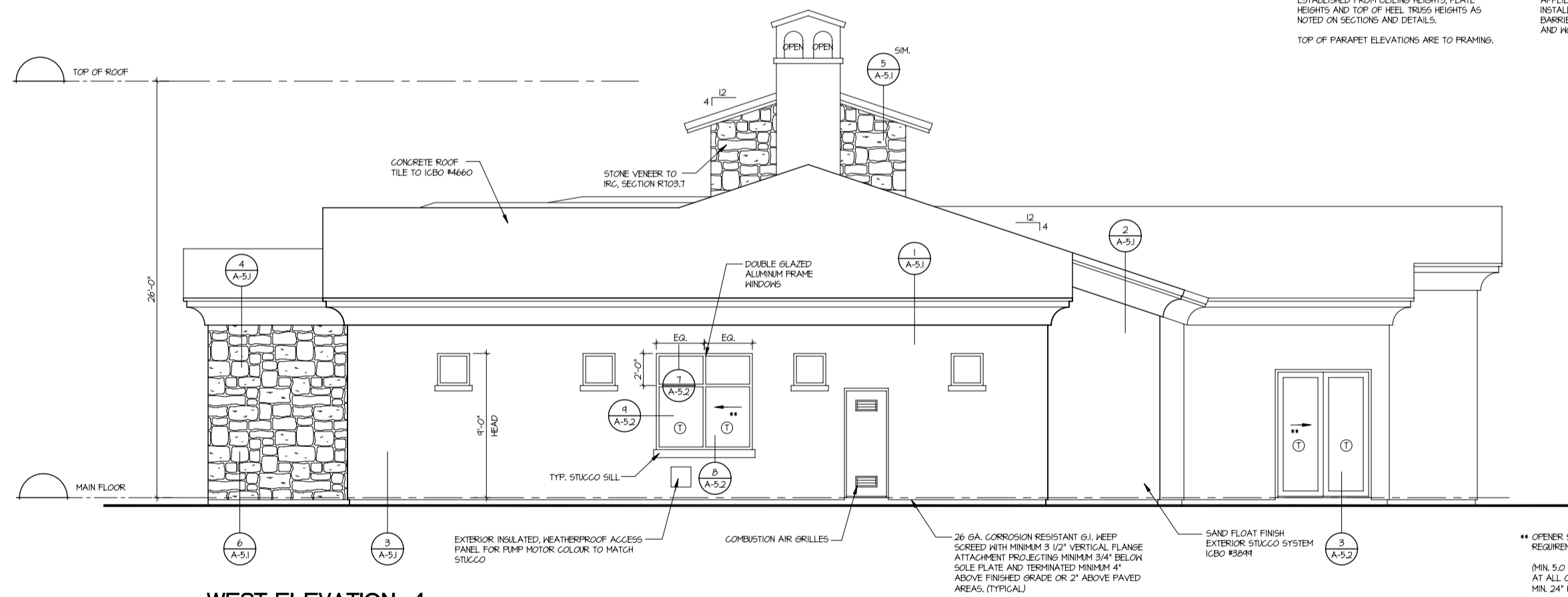


**EAST ELEVATION 3**

\*\* OPENER SIZE IN BEDROOMS TO MEET EGRESS REQUIREMENTS OF IRC SECTION R302.1  
 MIN. 5.0 sq. ft. CLEAR AT GRADE AND 5.7 sq. ft. AT ALL OTHER LOCATIONS WITH MIN. 20" WIDE x MIN. 24" HIGH AND MAX. 44" SILL ABOVE FLOOR



**WEST ELEVATION 4**

\*\* OPENER SIZE IN BEDROOMS TO MEET EGRESS REQUIREMENTS OF IRC SECTION R302.1  
 MIN. 5.0 sq. ft. CLEAR AT GRADE AND 5.7 sq. ft. AT ALL OTHER LOCATIONS WITH MIN. 20" WIDE x MIN. 24" HIGH AND MAX. 44" SILL ABOVE FLOOR

RISE HEIGHTS NOTED ARE FOR GENERAL REFERENCE ONLY. ACTUAL HEIGHTS TO BE ESTABLISHED FROM CEILING HEIGHTS, FLOOR HEIGHTS AND TOP OF HEEL TRUSS HEIGHTS AS NOTED ON SECTIONS AND DETAILS.  
 TOP OF PARAPET ELEVATIONS ARE TO FRAMING.

MAG ONE-COAT STUCCO COMPLIANCE PROGRAM: ALL ONE-COAT STUCCO SYSTEMS SHALL BE APPLIED BY MANUFACTURER APPROVED INSTALLERS. AN APPROVED WEATHER-RESISTIVE BARRIER SHALL BE INSTALLED OVER ALL FRAMING AND JOIST BASED SHEATHING.

PROVIDE WEATHER PROTECTIVE FLASHING AT EACH WALL PENETRATION AND OPENING PER IRC SECTIONS R103.2 AND R103.3  
 REFER TO DETAILS ON SHEET A5.5